

Y-015A | A Mamluk Weft-faced Silk Woven Fragment

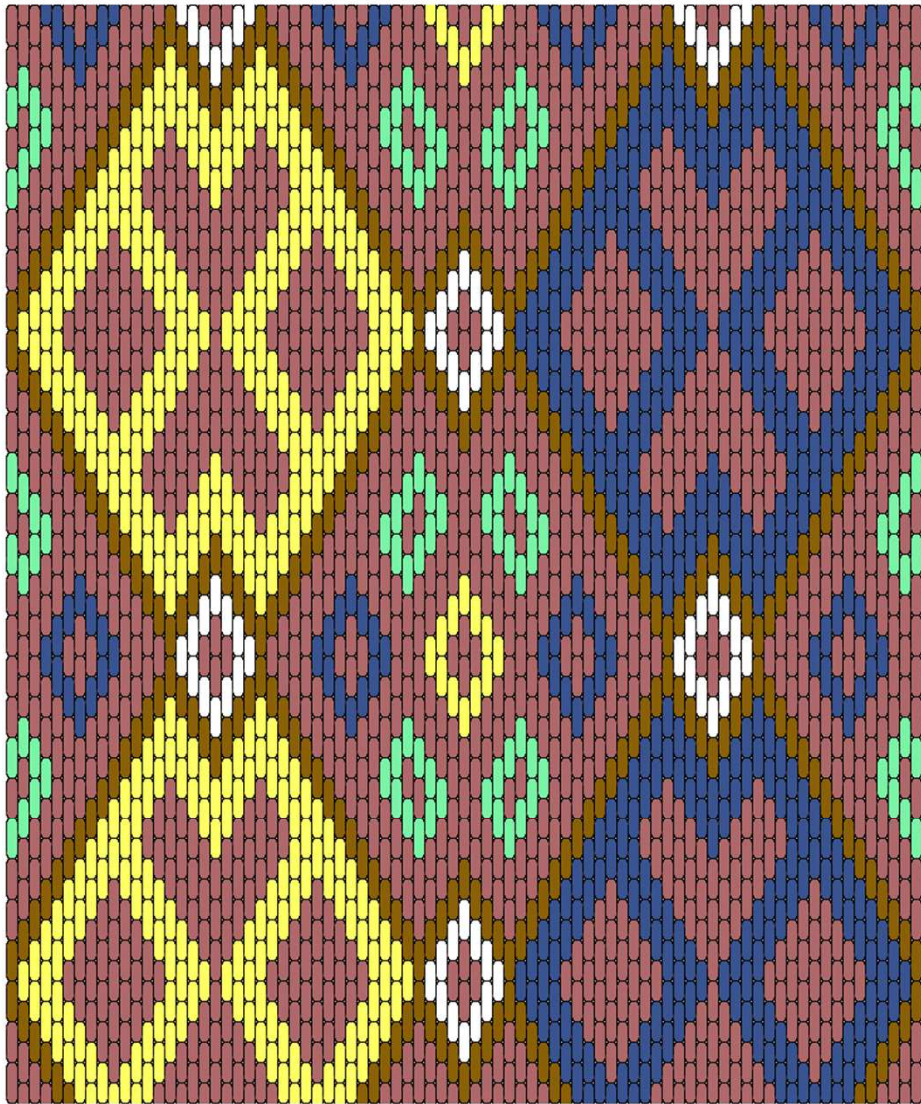
A Stitch Out of Time

Date/Period
14th Century

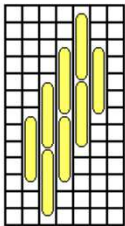
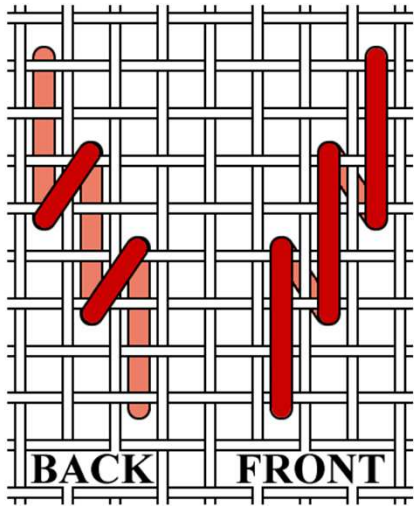
Country
Egypt?

Museum
Location Unknown. Auctioned by Christies 23 October, 2007

Catalog Number
Sale 7428, Lot 39



- Purple-red silk
- Golden yellow silk
- Medium blue silk
- Brown silk
- Light green silk
- White silk



This piece is described as “weft-faced weaving”, however an examination of the only photograph I have seen does not support this. In several places ground fabric can be seen, with the distinctive bunching of threads usual to brick stitch. This is identified as a Mamluk bag, but aside from the bright colors and geometric design, it does not look like other extant examples, and uses a different technique. I have not found any examples of this kind of work from Egypt, and an examination of imagery of Mamluk textiles does not turn up similar decoration.

This was obviously a bag of some sort, the fragment is now opened back up, but you can see a line of tassels across the middle, matching the ones on the sides.

Assessment: Originally from Western Europe, late 14th - early 15th century.

“The simple woven linen ground woven in brilliantly coloured silks with a lattice of raspberry-pink, indigo, medium blue and lemon-yellow lozenges containing smaller coloured panels, divided by brown lines linking small ivory lozenges, various associated small tassels, original loom width, mounted on board 4 3/8 x 7 1/2 in. (11 x 19cm.)”
36 thread per inch evenweave fabric.

