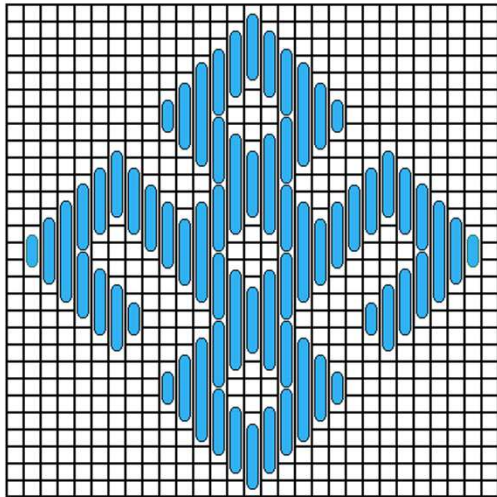


Y-021A A Book Cushion

A Stitch Out of Time

Date/Period Late Medieval	Country Sweden	Museum Ärentuna parish, Uppland, Sweden	Catalog Number none
------------------------------	-------------------	--	------------------------



This is an unusual piece. Instead of the silk that most of the extant pieces I have seen so far employ, This piece was worked in woollen yarn, two-ply from what I can make out from the very few photos available. Colors used are red, blue, yellow, green, and brown.

No dimensions, stitch counts, or detailed photographs are available.

