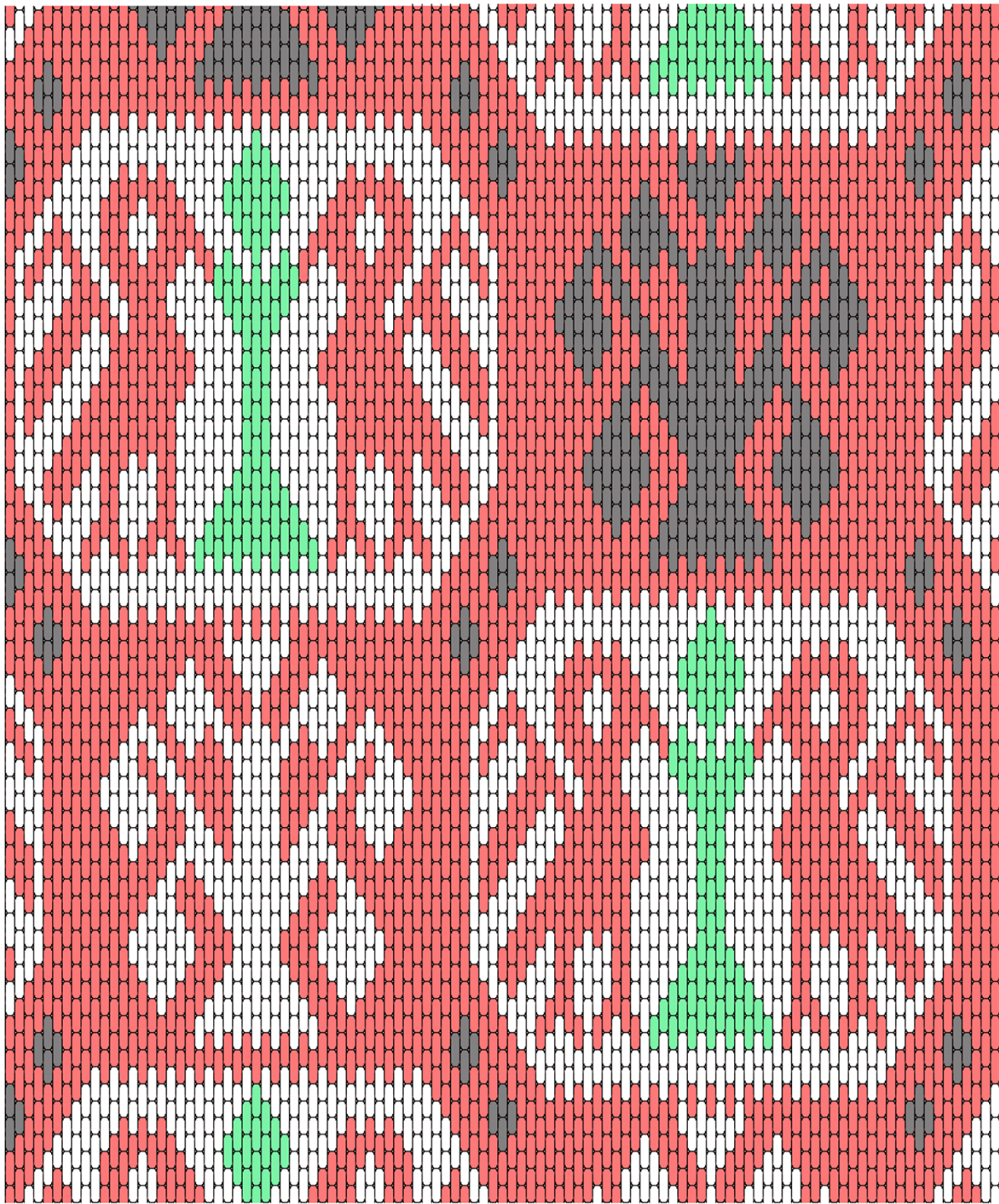


Y-023A	Embroidery		<h1>A Stitch Out of Time</h1>
Date/Period Early 15th Century	Country Germany	Museum National Museum of Art, Architecture and Design, Oslo	



Hand embroidered with silk thread and wire bastfiber on ground of hand-woven linen fabric in plain weave.  
 Germany, Early 1400s  
 ~39 thread per inch evenweave fabric

